

B5G/6G Convergence Network

Atoe Lin
Compal Electronics Incorporation
Atoe_Lin@compal.com

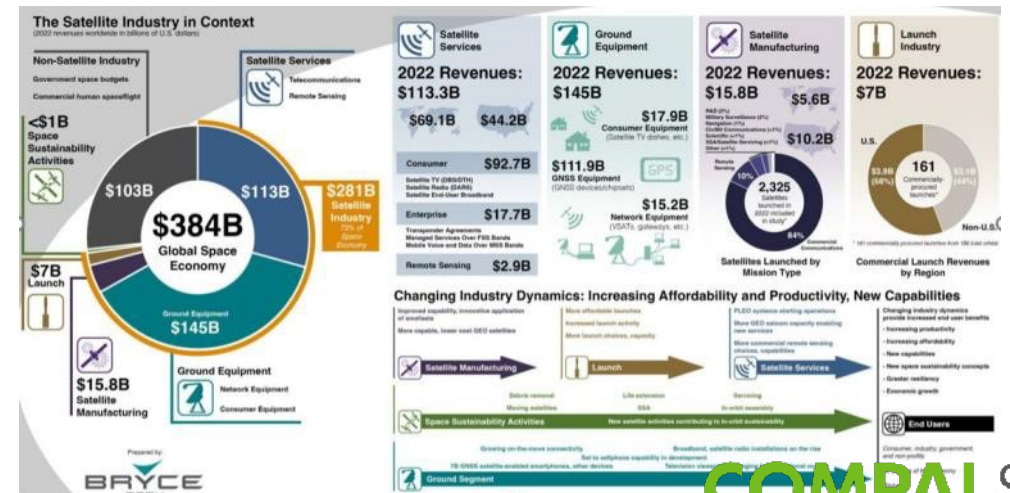
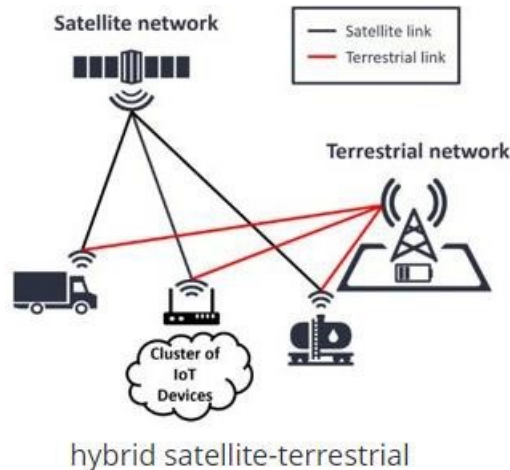


B5G/6G Convergence Network

3GPP NTN Networking Integration and Service Provision



- 2024 R17 NTN IOT Service Deployment in Vertical Market
- 2025 Integrated LEO User Terminal Design/Made by Taiwan
- 2026 R18/19 Next Gen Satellite Connectivity integrated with 5G Infrastructure and SDN



Compal Telecommunication Portfolio

Compal as 5G UE to RAN Infrastructure supplier supports customers to offer and enable real connectivity and vertical applications



Module

5G UE/ CPE

Satellite

5G ISC

5G O-RAN

Private Network

3GPP Latest Release R17, R17 NR-Recap, R16, R15 and 4G with Mediatek & Qualcomm

RXM/L Module



RML Module

Leo
R16 T830 mifi



Raku
R15 Mifi



Tributo
P&P Dongle



Spider
5G XR Glass



Broadband
Rhea
LEO KU Phase Array



Cronus
GEO KU Phase Array



Narrow Band
Demeter
NTN IOT Hub



RML
NTN Module



Cedar
Sub6 ISC



Hinoki
mmW ISC



Morus
Sub6 Femtocell



Cypress & Teak
ORU



McLaren
DU Inline accelerator



Maple
OCU & ODU



Offer end-to-end 5G network system solution via integration with partners, system stabilization, and customization

Strategic Alliance & Ecosystem Partnership

Compal partners with ecosystem service provider, equipment and solution providers, to strategically invest in key technology sectors in line with cellular and satellite convergence

megatrend

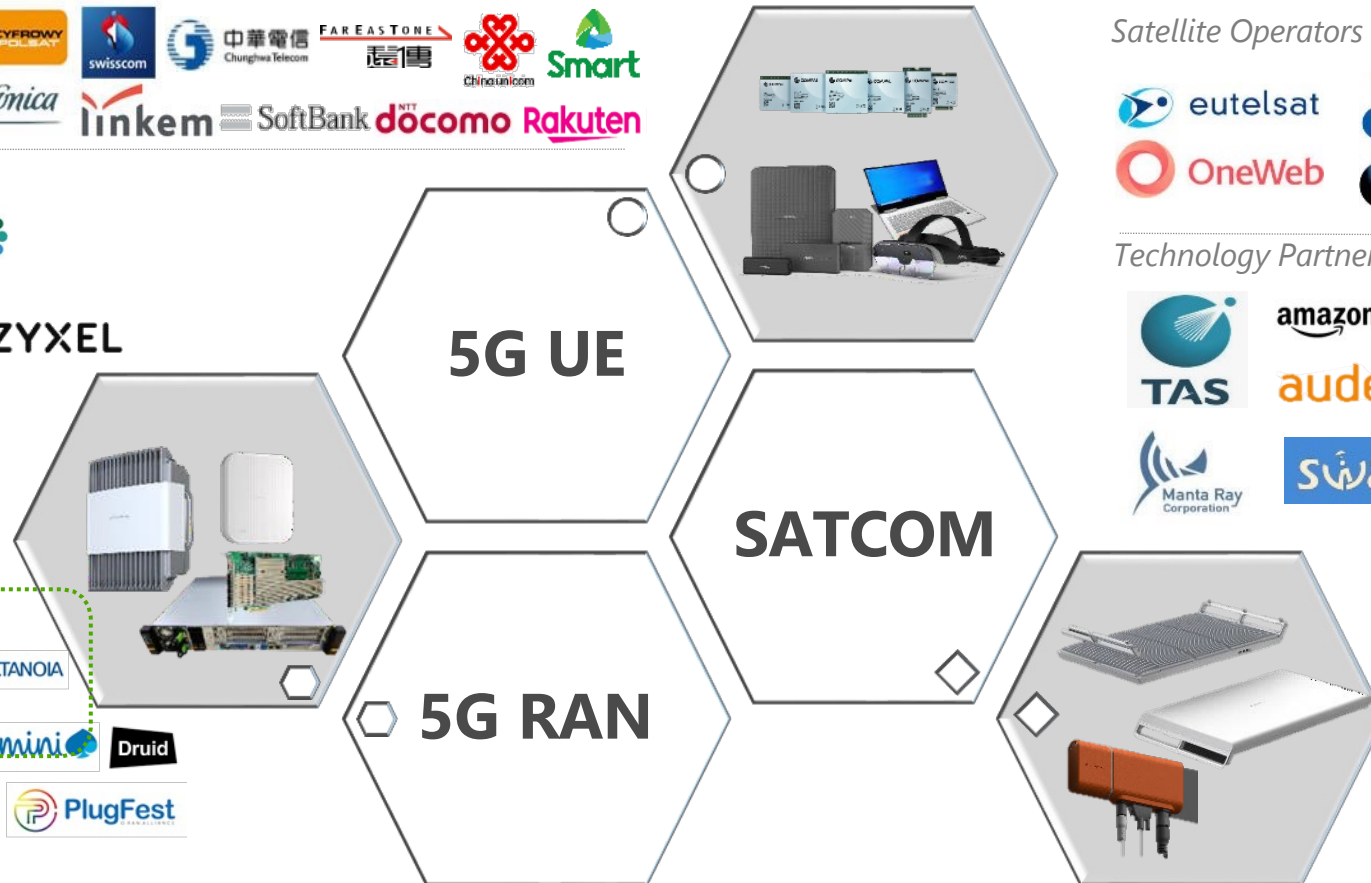
Telecom Operators



Technology Partners



Solution & Technology Partners



Satellite Operators



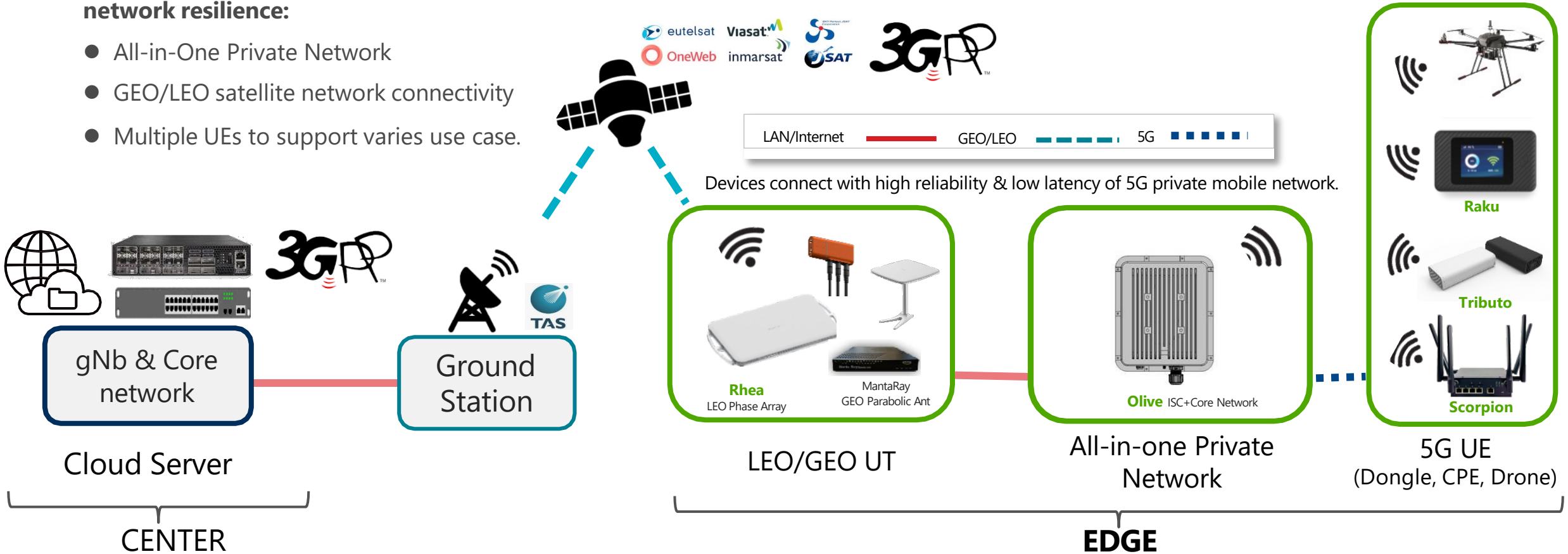
Technology Partners



Integrated 5G Network over Satellite

Integrated 5G+Satellite solution contains 3 major elements to support various use case upon disaster recovery and network resilience:

- All-in-One Private Network
- GEO/LEO satellite network connectivity
- Multiple UEs to support varies use case.



Disaster Response Center
Fire Rescue Headquarters
Professional Medical Team



Interests of collaborations

- A. Integrated NTN RAN and Cloud Service to realize SataaS (Satellite cloud as a services)
- B. Buildup SataaS E2E Solution from UE/ UT to NR RAN for Mobility & IOT Applications
- C. Partnership with Cellular carrier and local SI supplier for regional deployment

SataaS Architecture

Asia Service Deployment

Service Montaine & Earn Profit



NTN Broadband

Standardized

LEO/GEO Multi-Orbit UT

Various UT Design for Cases

- A. Build UT by tightly collaborate with Tech Partner (ex. ITRI, NTU) and Vendors
- B. Realized Taiwan Domestic, and WW market with Partners, GOV, or Navy ..etc
- C. Create different UT for various use cases (maritime, on the move, automotive ..etc)

